

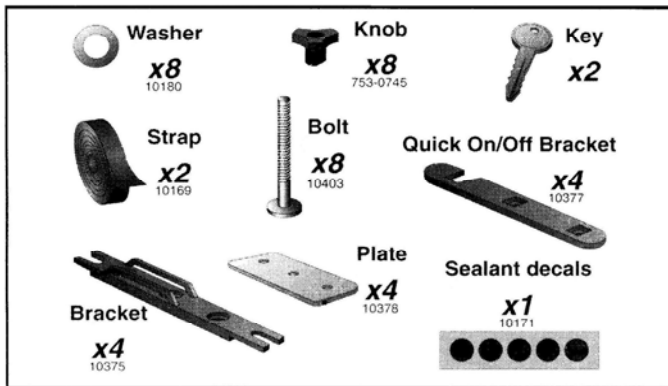


CAR TOP BOXES

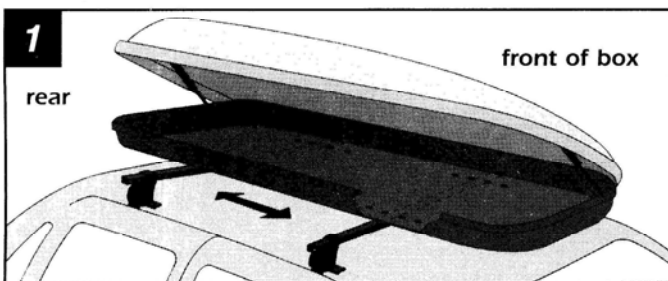
INSTALLATION INSTRUCTIONS

BEFORE YOU BEGIN...

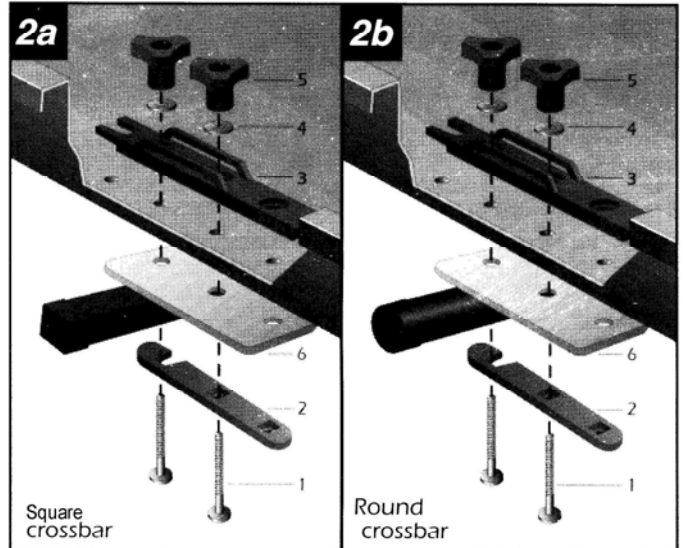
Please read the assembly instructions carefully. Make sure that all parts are included in the package. Assemble step by step. Prior to assembly ensure that the vehicle's roof is free from dirt and grime. Boxes can be directly mounted on factory installed roof racks with a recommended weight capacity of at least 150 lbs. Please check if your vehicle's factory rack has been approved for this application. Boxes mounted on racks that are not approved are not recommended, and are not covered by warranty.



- Check the manufacturers' guidelines for any restrictions about using car top boxes on your load carrier.
- Box weights: 26 lbs. (11.8 kg)
- Box and rack must be removed before going through an automatic car wash.

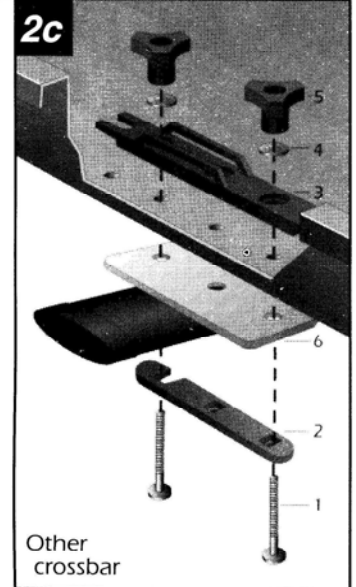


1. If necessary, adjust the distance between the load bars to match the pattern of the ready-drilled holes in the roof box. The maximum possible distance between the load bars should be used. Additional holes can be drilled in the base of the roof box without affecting its stability and load capacity. The minimum bar spread required is 21 5/8" for all boxes. The roof box should be centered on the load bars and parallel to the direction of travel (see Fig. 1), with its flatter end towards the front. Secure the load bars on the vehicle, and secure the box as follows.



2. The attachment mechanism can be installed while the box is on your car or off. The attachment mechanism is meant to be left on the box when not in use to avoid losing parts and for ease of re-installing the box.

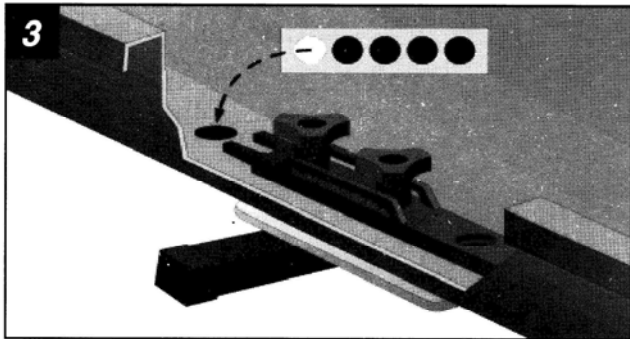
Determine the mounting holes to be used for your car's rack configuration. The quick connect system has been designed to be used with removable rack systems and rack systems installed at the factory that have a recommended weight capacity of at least 150 lbs. Place the bolts as close to the rack system's cross bars as possible.



Insert a bolt (1) from underneath the load bars, through the quick on/off bracket (2), through the support plate (6) and into the pre-drilled hole in the base of the box. Fit the internal tie-down fitting over the threads of the bolt where it protrudes through the base of the box. Fit the washer (4) over the threads and loosely secure with the knob (5). Feed the second bolt through the box hole and bracket (3). Loosely tighten with a washer and knob.

Carefully place the box onto the crossbars. Be aware of the hardware hanging from the bottom of the box - lift box carefully to avoid damaging the finish of the vehicle.

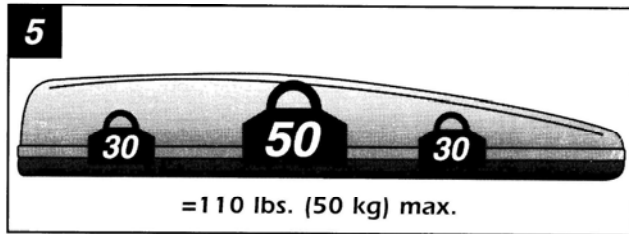
Arrange the support plate to fit between the box and the rack cross bar. Swing the slotted end of the quick on/off bracket around the bolt. Tighten knobs. Fasten the box this way at all four mounting points.



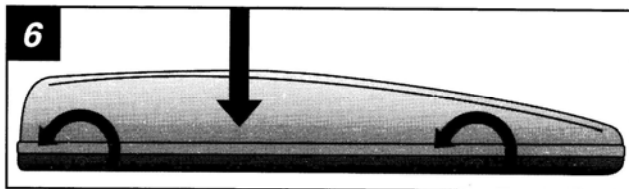
3. Cover the unused mounting holes in the base of the box with the sealant decals to help prevent water intrusion.



4. Insert the straps through the eyes of the brackets. Loads must be secured with the help of straps to prevent them from sliding, and fastenings should be checked at regular intervals.



5. Make sure that loads are evenly distributed inside the roof box. Do not exceed the maximum permitted load for the roof as recommended by the vehicle manufacturer. Do not exceed the maximum recommended weight for the rack system.



UNLOCKING / LOCKING THE BOX:

Unlocking: Using the key attached to the inside of your box, insert and turn clockwise at both locking points. Depress the button in the center of the locks while lifting the lid of the box.

Locking: Press down on the lid - in most cases there will be an audible click. Assure latching by attempting to lift the lid. For maximum security, lock the box and remove the key while not in use.

GUIDELINES

When using load carriers and accessories, the user must understand the precautions. The points listed below will assist you in using the rack system and will encourage safety.

- For quality fits and safety, use only the recommended rack or accessory. Do not assume a rack will fit, always check with Dealer when obtaining a new vehicle. Use only approved accessories on Load Carriers. Using other brands will void your warranty.
- Do not carry more than 74 kg (165 lbs.). Load carriers do not increase gutter or roof strength. Loads that exceed this limit cannot be warranted. Total load = cargo weight plus weight of accessories used to carry cargo.
- Always make sure car doors are open when mounting a roof rack system. Make sure all knobs, bolts, screws, straps, and locks are firmly attached, tightened and locked before every trip. Knobs, bolts, screws, straps, and locks must be periodically inspected for signs of wear corrosion and fatigue. Check your load at stops during the trip to ensure continued fastening security.
- Check local and state laws governing projection of objects beyond the width of a vehicle. Be aware of the width and height of your cargo since low clearance branches, bridges, and parking garages can affect the load. All cargo will affect the vehicle's driving behavior. Never drive with any lock, knob, or rack in an open or unlocked position. All long loads such as, but not limited to, sailboards, surfboards, kayaks, canoes, and lumber must be tied down front and rear to the bumpers or tow hooks of the vehicle.
- Remove your rack and accessories when they are not in use and before entering automatic car washes.
- All locks must be turned and moved periodically to ensure smooth operation. Use a graphite or similar dry lubricant to help this. Locks are designed to deter vandalism and theft. Remove valuable gear if your vehicle is unattended for an extended period. Place at least one key in the glove compartment.
- For safety to your vehicle and rack system, obey all posted speed limits and traffic cautions. Adapt your speed to the conditions of the road and the load being carried.
- Do not use load carriers and accessories for purposes other than those for which they were designed. Do not exceed their carrying capacity. Failure to follow these guidelines or the products instructions will void the warranty.
- Consult with your dealer if you have any questions regarding the operations and limits of this product. Review all instructions and warranty information carefully.



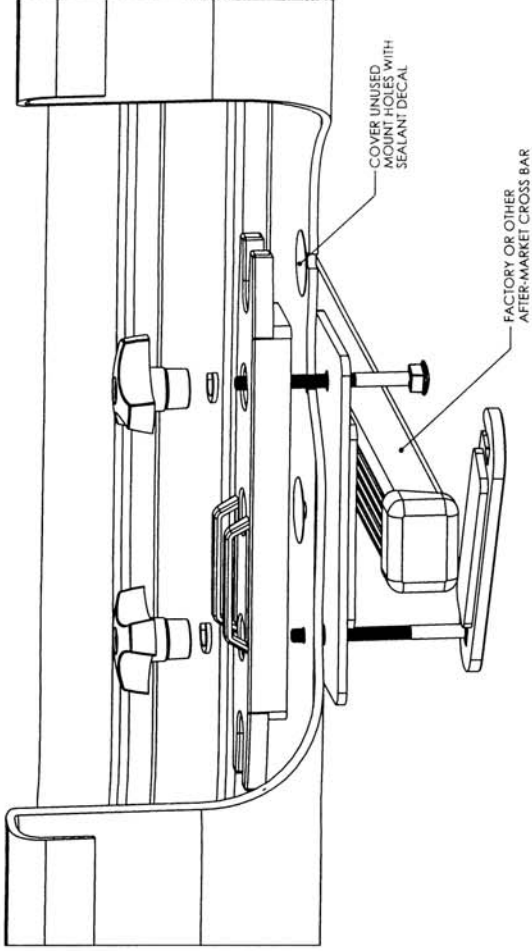
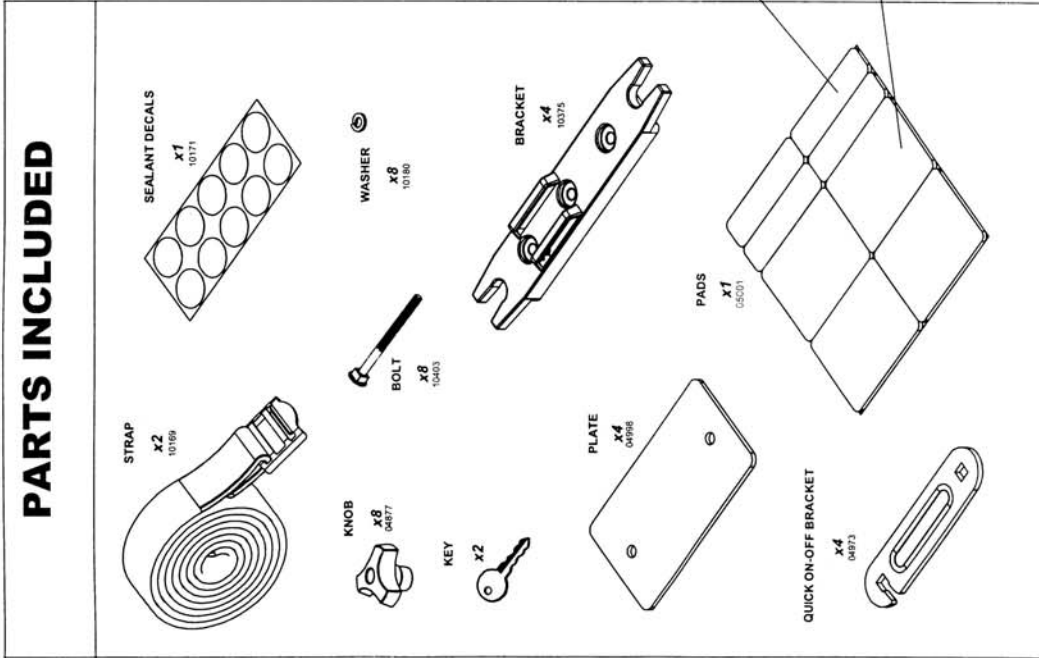
BEFORE DRIVING, ENSURE THAT THE BOX IS FULLY CLOSED AND LATCHED!

ProRac Systems, Inc.
7109 31st Avenue North
Minneapolis, MN 55427-2848
Toll Free: 1-800-217-7133
Phone: 763-546-5620
Fax: 763-546-0933
WWW.PRORAC.COM

FGAT 629-IS
Revised 8-08-06

ADDENDUM

includes new mounting hardware



PLACE ADHESIVE PADS ON PLATE & QUICK ON-OFF BRACKET TO PROTECT FINISH ON CROSS BAR AND PROVIDE SHOCK DAMPENING OF MOUNTS.

